



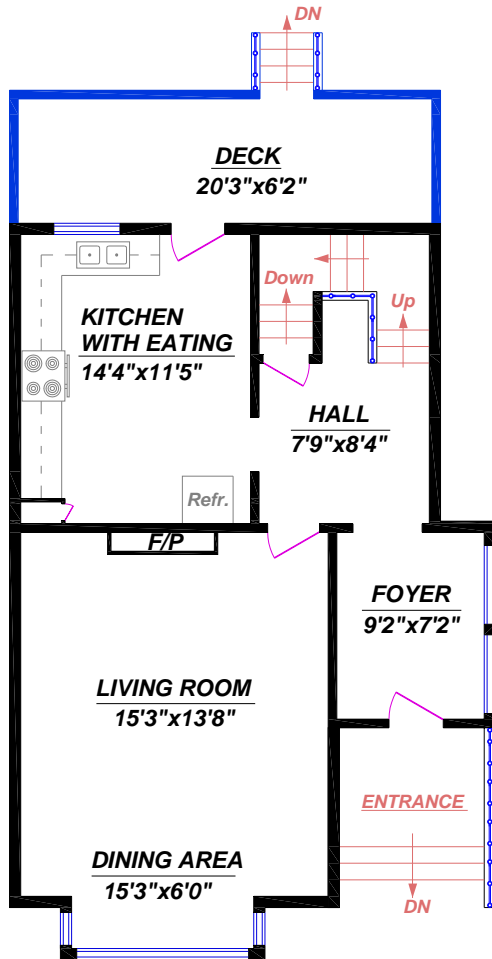
KEVIN O'TOOLE
Prudential Sussex Realty
 2397 Marine Drive
 West Vancouver, BC V7V 1K9
 phone:(604) 925-2911
 www.findaproperty.ca



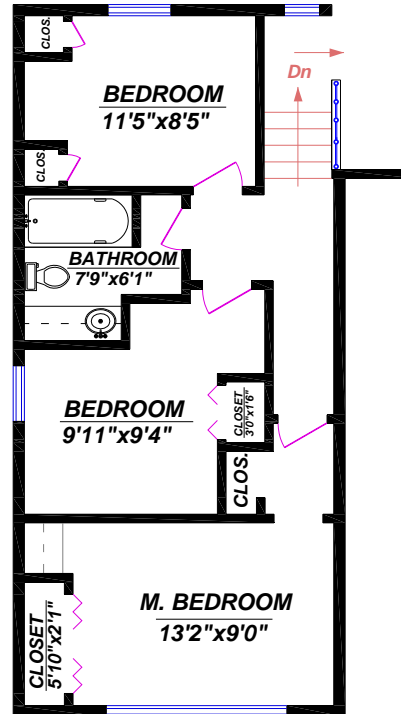
821 Ridgeway Ave., North Vancouver

Main Floor: 720 sq.ft. OTHER AREAS:
 Upper Level: 579 sq.ft. Deck: 125 sq.ft.
 Lower Level**: 858 sq.ft. Front Porch: 53 sq.ft.
 TOTAL: 2,157 sq.ft.

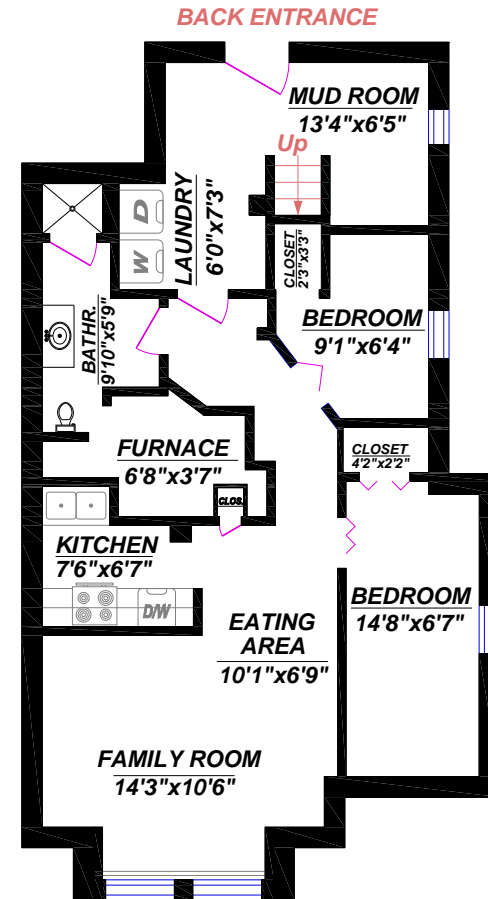
**) Incl. Unfin. Area: 24 sq.ft.



MAIN FLOOR



UPPER LEVEL



LOWER LEVEL

All measurements are approximate.

© Vancouver Realty Support Group, (604) 761-7919
 email: realtorssupport@telus.net
 www.realtorssupport.com